

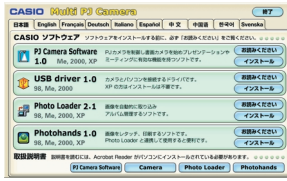
Multifunctional Camera System YC-400 Business Document Startup Mode Quick Guide

* The PJ Camera Software's Business Document startup mode is for recording and projecting images of paper documents and three-dimensional objects. This Quick Guide provides basic information and procedures for projecting in the Business Document Startup Mode.

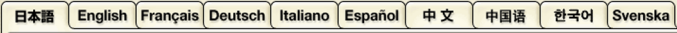
To set up for projection

1 Install the bundled software (PJ Camera Software) on the computer you plan to use.

- Place the CASIO CD-ROM that comes bundled with the YC-400 package into the computer's CD-ROM drive.
 - This should cause the "CASIO Multi PJ Camera" screen to appear on your computer screen automatically.



- Click the tab for your language.



- Click the [Install] button for "PJ Camera Software" (top option).
- Follow the instructions that appear on your screen to install the software.
- After installation is complete, restart the computer.

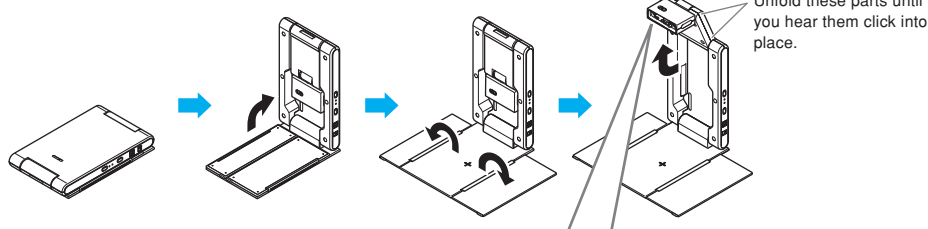


After your computer restarts, this icon (PJ Camera Software icon) will be displayed in your computer's task tray in the lower right corner of the screen.

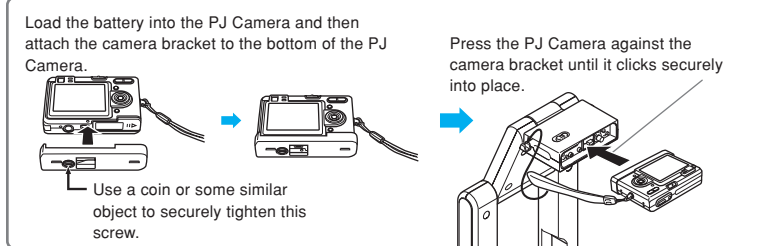
- Configure your computer monitor's resolution setting for XGA (1024 × 768) or SVGA (800 × 600). Using any other resolution setting will cause an error message to appear when you try to start up PJ Camera Software.

2 Set up the PJ Camera Stand.

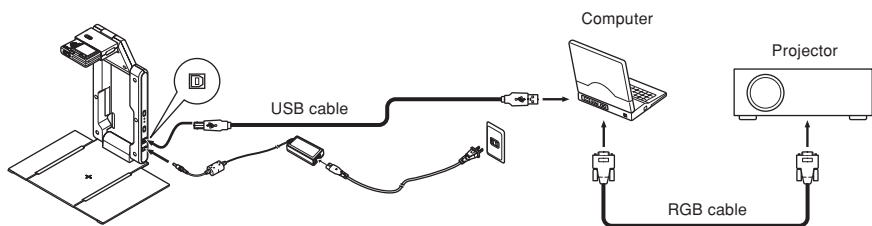
- Unfold the PJ Camera Stand as shown below.



- Attach the PJ Camera to the camera stand.



3 Connect the power cord and cables as shown below.



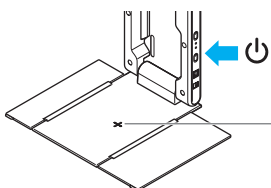
Important!

- Be sure to connect the bundled AC adaptor to the PJ Camera Stand.
- Operating the PJ Camera on battery power without connecting the AC adaptor to the PJ Camera Stand can run down battery and so projection becomes impossible.
- Note that the YC-400 does not come with an RGB cable. To connect a projector to your computer, use the RGB cable that comes bundled with the projector or purchase a commercially available cable.
- For full details about connections, see the documentation that comes with your computer and projector.

4 Turn on power.

- On the PJ Camera Stand, press the [Power] button.

- If you are starting up the system for the first time, a "Found New Hardware Wizard" dialog box will appear (in the case of Windows XP). Select the "Install the software automatically (Recommended)" check box, and then click [Next]. If the "CASIO MULTI PJ CAMERA has not passed Windows logo testing" dialog box appears, click [Continue Anyway]. If the "Digital Signature Not Found" dialog box appears, click [Yes].

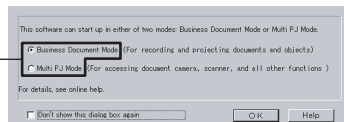


Important!

- The camera uses this cross mark for auto adjustments. Make sure there is nothing on the document stage at this time.

- Turning on power will cause the PJ Camera Software to start automatically and display the dialog box shown nearby.

Check to make sure that "Business Document" is selected as the startup mode.



- Leaving "Business Document" selected as the startup mode, click the [OK] button.

- This will close the dialog box, and cause the PJ Camera to start auto adjustment.



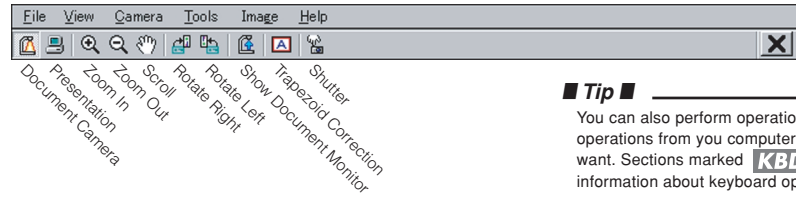
Document projection setup is complete when your computer screen appears as shown above.

Projecting a Document Image

Using the Operation Bar

After completing the procedure under "To set up for projection" on the other side of this sheet, move the mouse pointer () to the top of the screen on your computer display. This will cause the PJ Camera Software operation bar to appear.

You can control the PJ Camera Software using the buttons and menus of the operation bar.

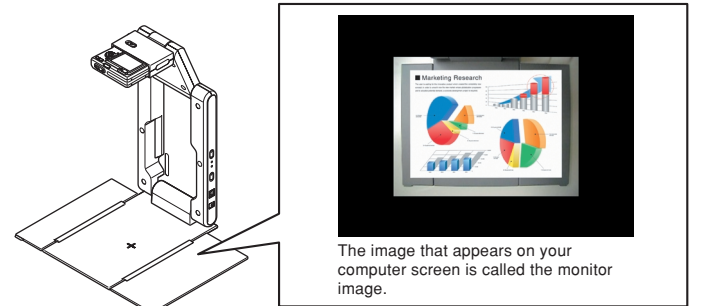


Tip

You can also perform operation bar button operations from your computer keyboard, if you want. Sections marked **KBD** contain information about keyboard operations.

To project a document image

- Place the document you want to project onto the PJ Camera Stand's document stage.



The image that appears on your computer screen is called the monitor image.

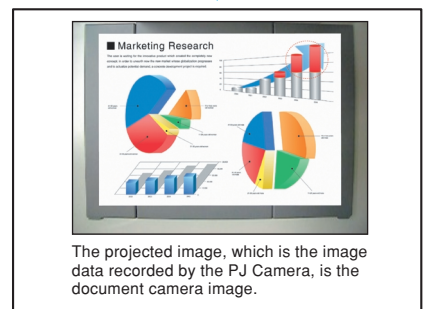
- Display the operation bar, and then click .

- This will project an image of the document.

KBD Instead of clicking the button above, you could press the [Enter] key on your computer keyboard.

Tip

When Trapezoid Correction is turned on, PJ Camera Software will correct the orientation of the projected image, up to a point, so the projected image appears straight, even if the document on the document stage is not straight. To turn on Trapezoid Correction, click the (Trapezoid Correction) button on the operation bar so it is depressed ().



The projected image, which is the image data recorded by the PJ Camera, is the document camera image.

- To project the image of another document, replace the document on the document stage and then click .

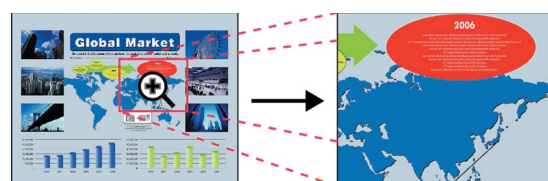
KBD After projecting the images of two or more documents, you can use the left or up arrow key to scroll to a previous document, and the right or down key to scroll forward through projected images.

To zoom in on the projected document image

- While the image of a document is being projected, display the operation bar and then click .

- This changes the mouse pointer to .

- Move the pointer to the part of the image that you want as the center of the zoomed image, and then click.



- This will enlarge the projected image. You can perform this operation up to nine times.

KBD You can also zoom in on the projected image by holding down the computer's [Ctrl] key and pressing [↑].

To zoom out on the projected document image

On the operation bar, click and then click the screen.

KBD You can also zoom out on the projected image by holding down the computer's [Ctrl] key and pressing [↓].

To scroll a zoomed document image

On the operation bar, click and then drag the screen.

KBD You can also scroll the projected image pressing one of the arrow keys on the computer keyboard.

To return a zoomed image to its normal size

Press the [Delete] key on the computer keyboard ([Del] key on some computers).

Rotating the Projected Image

- To rotate the projected image 90 degrees right

On the operation bar, click .

KBD You can also rotate the projected image right by holding down the computer's [Ctrl] key and pressing [→].

- To rotate the projected image 90 degrees left

On the operation bar, click .

KBD You can also rotate the projected image left by holding down the computer's [Ctrl] key and pressing [←].

To quit PJ Camera Software

On the operation bar, click .